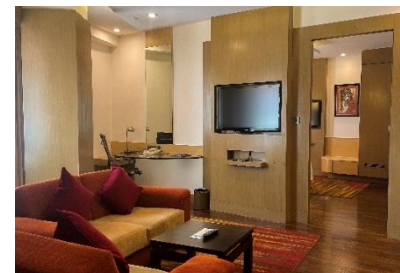






Radisson Hotel Kathmandu



HOTEL FEATURES & AMENITIES

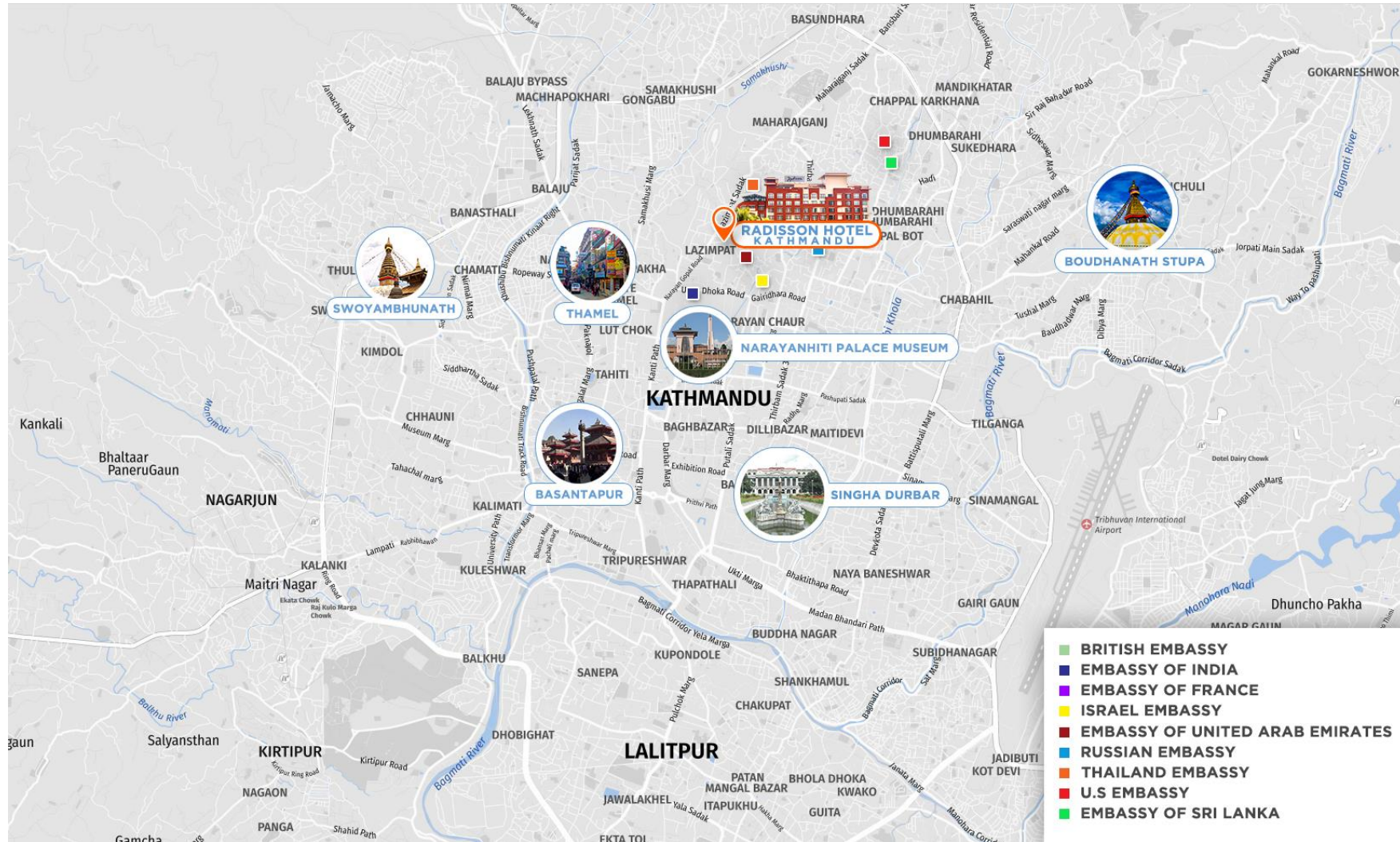
- 260 beautifully appointed rooms and suites.
- Every room is equipped with a mini-bar, an in-room personal safe deposit locker, a hair dryer, a tea/coffee maker, and an iron with an ironing board, among other amenities.
- 4 on-site restaurants and bars.
- 20,340 sq. feet of meeting & event space.
- Health Club with state of the art Fitness Center, spa, massage, steam, sauna, Jacuzzi and roof-top swimming pool.
- Business Center with full secretarial services including Internet access and International direct dialing facilities.
- Travel Desk (Travel and Tour Services).
- Concierge & Laundry services.
- Gift Shops.

AREA ATTRACTIONS

- Thamel
- Narayanhiti Palace Museum
- Durbarmarg
- Garden of Dreams
- Kathmandu Durbar Square
- Hanuman Dhoka Durbar Museum
- Pashupatinath Temple
- Boudhanath Stupa
- Asan Market
- Swayambhunath
- Patan Durbar Square



CITY MAP



HOTEL OVERVIEW

Rooms

The hotel offers 260 beautifully appointed rooms, which include Superior rooms, Deluxe rooms, Premium rooms, Business Class rooms and luxury suites. The rooms are equipped with amenities like mini bar, in-room personal safe deposit locker, hair dryer, tea/coffee maker and iron & ironing board.

S.No	Name	Number	Net Area (M ²)	Net Area (Sq. ft)
1	Superior Room	89	25	270
2	Premium Room	134	29	312
3	Business Class Room	22	41	441
4	Junior Suite	5	32	343
5	Premium Suite	4	44	473
6	Deluxe Suite	4	53	570
7	Penthouse Suite	1	170	1830
8	Apartment	1	106	1720
	TOTAL	260		

HOTEL OVERVIEW

Rooms



HOTEL OVERVIEW

Meetings & Events

We offer perfect solutions for your meetings, workshops or celebrations.

The meeting rooms are suitable for hosting gatherings of all kinds, from intimate family reunions to corporate meetings and incentive trips.

Impress your guests in our versatile event space with banquet facilities :

- Conference, theater, cluster, U-shape and classroom-style seating arrangements are available in the meeting venues.
- 20,340 sq. feet of meeting & event space.
- Seven separate meeting and conference rooms to accommodate meetings up to 450 persons.
- Full conference facilities including audio visual and secretarial services.
- Outdoor catering services are also available.

HOTEL OVERVIEW

Meetings & Events: Capacity Chart

NAME	AREA IN SQ. FT.	SIZE l x b x h	THEATER	U-SHAPE	CLASS ROOM	CLUSTER	RECEPTION
Nepa Dhuku	4694	25m X 17m X 4.5m	450 pax	150 pax	150 pax	225 pax	1200 pax
*Nepa	2029	11m X 17m X 4.5m	150 pax	60 pax	80 pax	70 pax	200 pax
*Dhuku	2665	14m X 17m X 4.5m	250 pax	80 pax	120 pax	110 pax	300 pax
Begnas	2855	15m X 18m X 3m	150 pax	60 pax	50 pax	70 pax	200 pax
Gosaikunda	770	10m X 7m X 3m	50 pax	28 pax	30 pax	30 pax	30 pax
Rara	901	15m X 6m X 3m	70 pax	40 pax	30 pax	42 pax	40 pax
Phoksundo	490	6m X 7m X 3m	25 pax	18 pax	18 pax	-	20 pax
Waterfall Garden	7033	35m X 18m X 6m	-	-	-	-	200 pax
Board Room	218	6m X 4m X 3m	-	10 pax	-	-	-

PREFUNCTIONS	AREA IN SQ. FT.	SIZE
Rara + Gosainkunda	605	11m X 5m X 3m
Begnas	361	6m X 5.5m X 3m
Nepa Dhuku	2029	18m X 10m X 3m

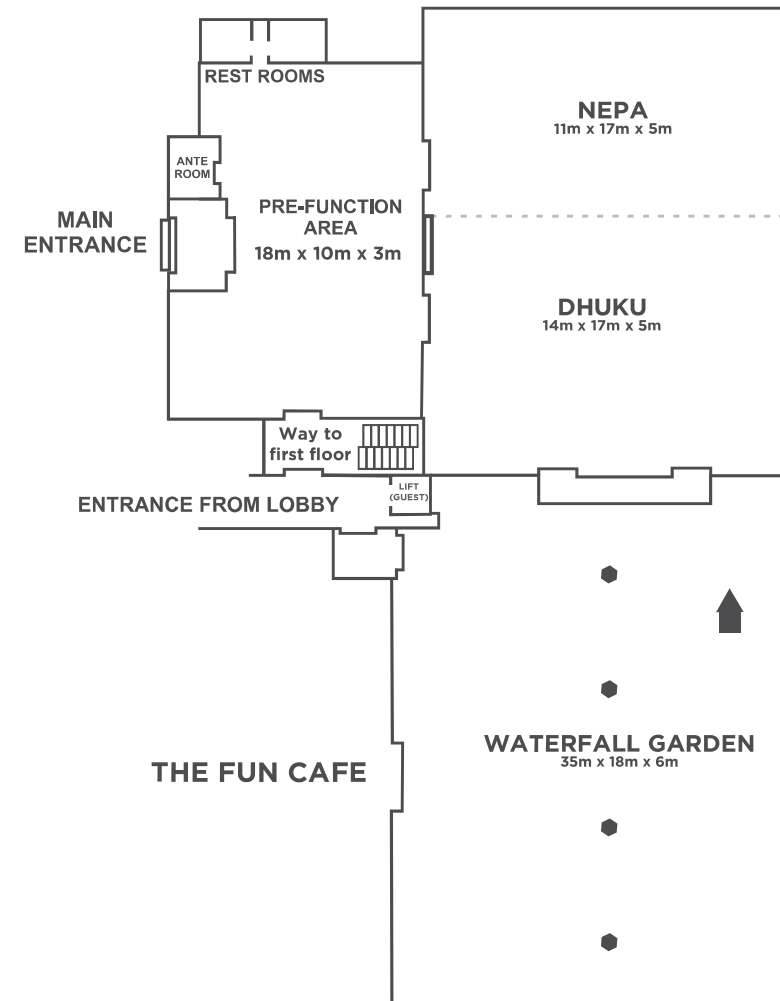
*The Nepa-Dhuku Hall can be partitioned as individual meeting space, Nepa and Dhuku.

HOTEL OVERVIEW

Meetings & Events: Floor Plan: Nepa-Dhuku



GROUND FLOOR : MAIN WING NEPA-DHUKU HALL FLOOR PLAN

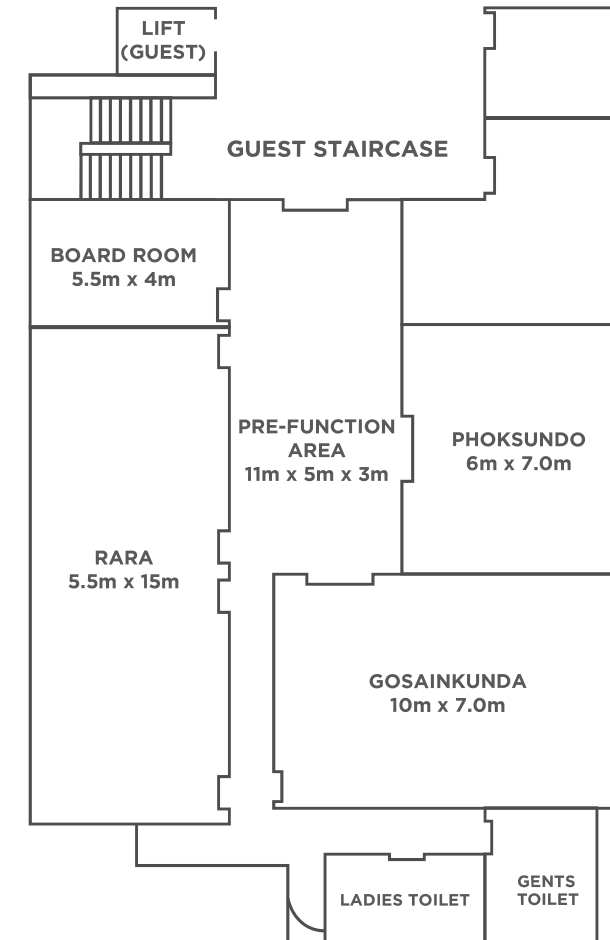


HOTEL OVERVIEW

Meetings & Events: Floor Plan : 1st Floor Meeting Rooms

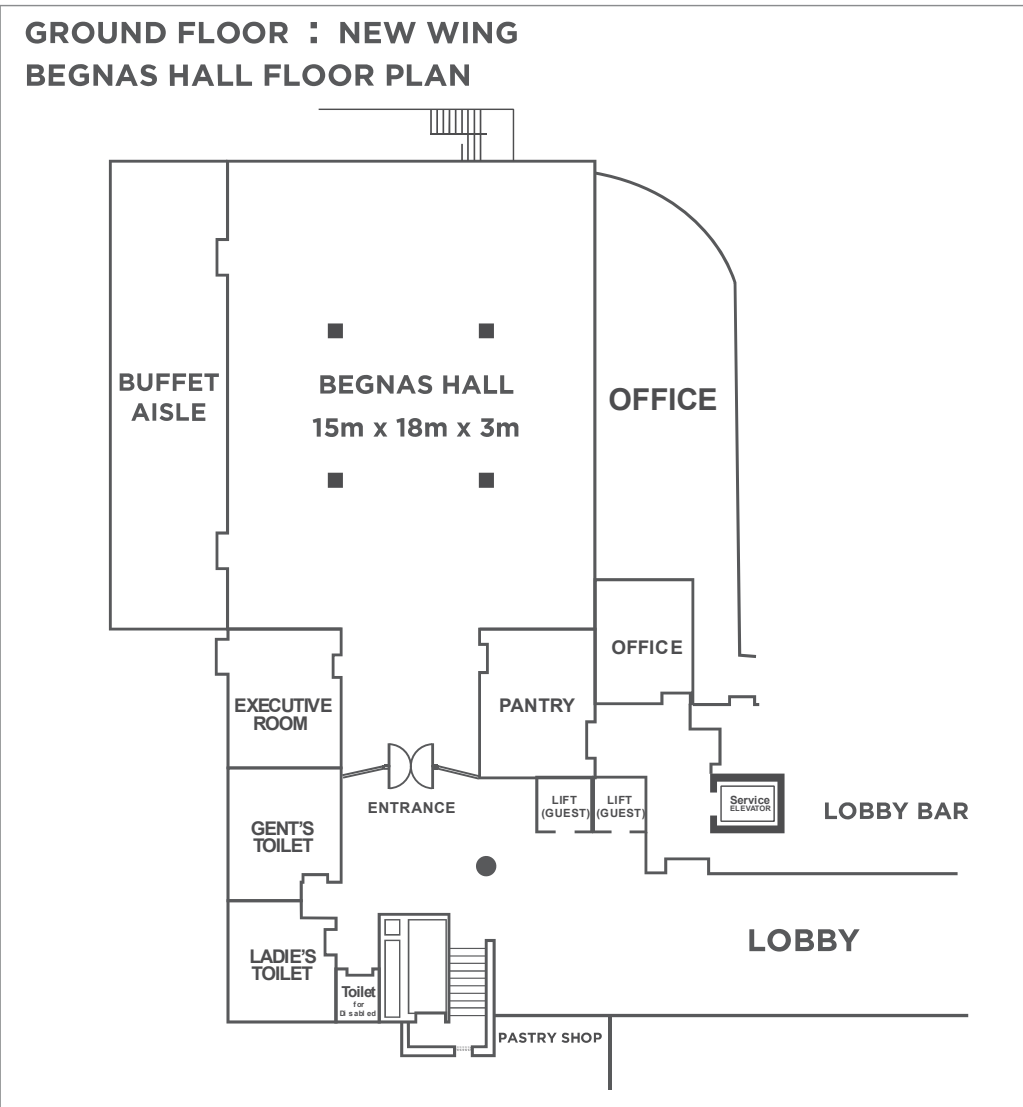


FIRST FLOOR : MAIN WING MEETING ROOMS FLOOR PLAN



HOTEL OVERVIEW

Meetings & Events: Floor Plan: Begnas Hall



HOTEL OVERVIEW

Meeting & Events



HOTEL OVERVIEW

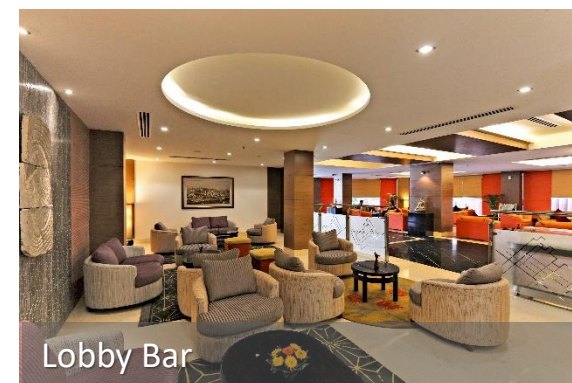
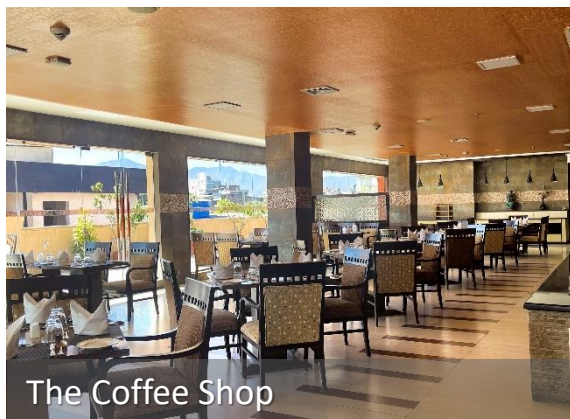
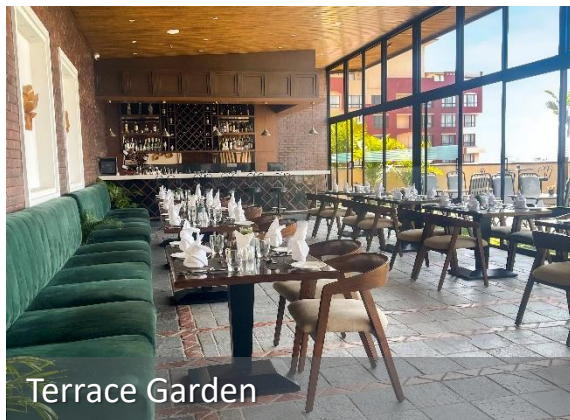
Restaurants & Bars

Whether you're searching for a convenient meal, a casual bar, or a place to meet with a client, we offer restaurants and bars that cater to your preferences.

S.No	Name	Description	Opening Hours	Cover
1	The Fun Café	Overlooking the Waterfall Garden, TFC serves an enticing selection of assorted flavors from around the world. Indulge in the great buffet spreads or choose from multi-cuisine a-la-carte menu.	6:30 am – 10:30 pm	98
2	The Coffee Shop	Whether you need a caffeine boost or a bite to eat, The Coffee Shop is sure to please. Located on the third floor, this inviting dining space offers excellent views of the city below. Wake up with a tasty breakfast buffet for a fresh start to your day.	6:30 am – 10:30 am	80
3	Terrace Garden	The Terrace Garden offers sumptuous dishes along with attentive service and spectacular fourth-floor views. Take a seat and indulge in light dishes, snacks and beverages while enjoying the lush garden.	11:00 am – 10:30 pm	50
4	Lobby Bar	Treat yourself to refreshing drinks, wrap up a business meeting or meet a friend for a chat at The Lobby Bar. The textured walls, earth-toned décor, and comfortable seating create a relaxed space for sipping cocktails.	8:00 am – 11:00 pm	18
5	The Pastry Shop	From flaky pastries at breakfast to sweet treats after dinner, The Pastry Shop has a delectable dessert for any time of the day.	8:00 am – 8:00 pm	12
6	In Room Dining	Want to enjoy the delightful dining options without leaving your room? Place your order with our in-room dining service available 24 hours.	24 hours	

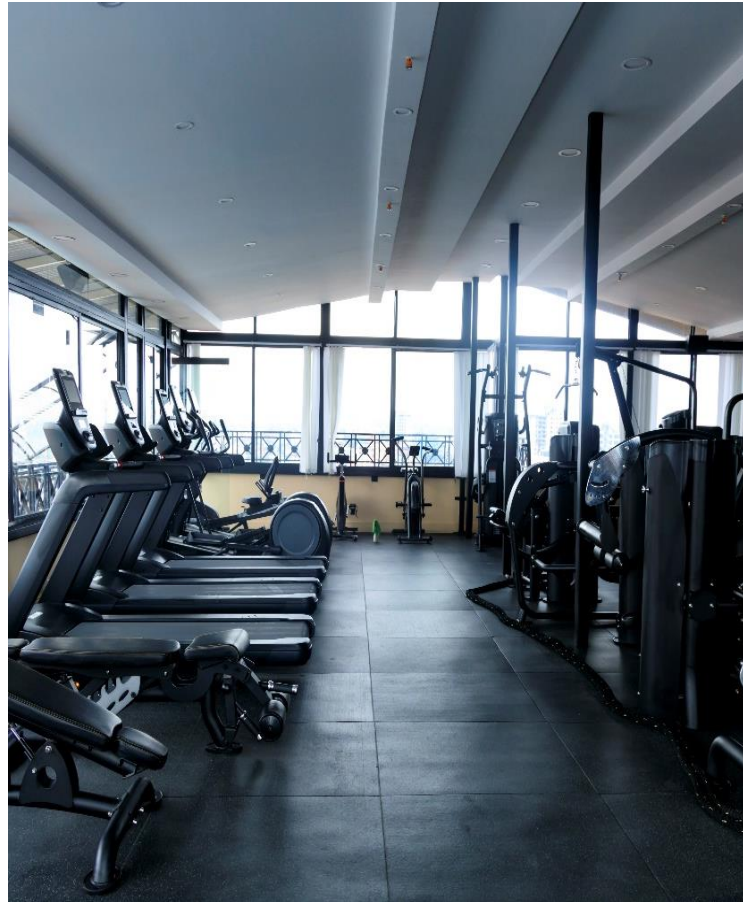
HOTEL OVERVIEW

Restaurants & Bars



HOTEL OVERVIEW

Additional Features



HOTEL OVERVIEW

Additional Features: Airport Lounge and Restaurant

Treat yourself to this truly enjoyable experience before you fly. Within the Executive Lounge and Airport Restaurant at TIA, frequent international travelers can relax , unwind and enjoy exclusive professional services in the tranquil atmosphere.



Contact

Radisson Hotel Kathmandu

P.O. Box: 2269 Lazimpat, Kathmandu, Nepal

Tel: 977-1-4511818, 4523888 Fax: 977-1-4511720

Email: sales@radkat.com.np

www.radisson.com/kathmandu



Radisson

SIMPLY DELIGHTFUL